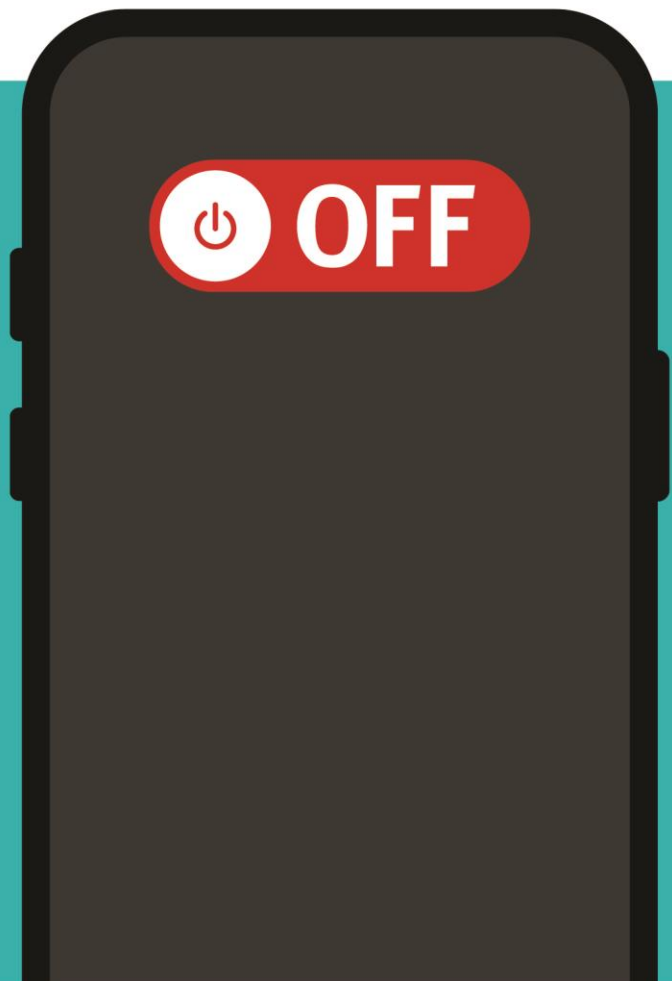


Students

'Away for the day' – Frequently asked questions

**Phones
away
for the day**
from 2024



Mobile phones and wearable devices

To assist schools in their communication with students about the implementation of 'away for the day' procedure, the following frequently asked questions and their answers can be adapted to suit a school's local implementation approach.

When does 'away for the day' begin?

From Term 1 2024, all students must keep their mobile phones switched off and 'away for the day' during school hours.

Wearable devices, such as smartwatches, can be worn however notifications must be switched off so that phone calls, messages and other notifications cannot be sent or received during school hours.

Can I bring my phone to school with me?

Yes, you can bring your mobile phone or wearable device to school, but you cannot use your phone during school hours.

Can I use my smartwatch?

Wearable devices, including smart watches can be worn during school hours.

However, notifications must be switched off so that phone calls, messages and other notifications cannot be sent or received during school hours.

Can I use my phone or wearable device at lunch or between classes?

No, your phone must be switched off and put away for the entire school day, including during break times and transitions between classes.

Why am I being asked to put my phone away for the day?

This approach is being implemented in all Queensland state schools to help:

- reduce distractions in the classroom
- increase and improve face-to-face conversations and interactions between students
- promote student health and wellbeing

- reduce the potential for student exposure to negative impacts of the digital world, such as cyberbullying.

My phone does not connect to the internet, can I still use it?

No. Any phone that has the ability to connect to telecommunication networks or the internet must be switched off and away for the day.

I use my mobile phone / wearable device to manage and monitor a health condition. Can I still use it?

Yes, exemptions will be made available if you require access to your mobile phone or wearable device for health monitoring purposes.

Please speak with your parent and school principal regarding processes for requesting an exemption.

I use my mobile phone / wearable device as an adjustment to access and participate in the curriculum. Can I still use it?

Yes, exemptions will be made available if you require access to your mobile phone or wearable device for learning, medical, disability and/or wellbeing reasons.

This may include scenarios where:

- your mobile phone or wearable device is used as a tool to support your learning
- your mobile phone or wearable device is used as a communication system or helps you participate in the school environment (including orientation and mobility)
- your mobile phone or wearable device is used as to support you access learning as a student with English as an additional language or dialect
- in Years 11 and 12 you are applying for Access Arrangements and Reasonable Adjustments (AARA) for assistive technology.

Please speak with your parent and school principal regarding processes for requesting an exemption.

Will I still get to use my phone for learning purposes, or in subjects that require technology?

In some circumstances, teachers may give permission for students to use their mobile phone or wearable device in the classroom, for learning purposes.

In this instance, teachers will help you to use phone for the agreed purpose, then at the conclusion of the activity, remind you to switch it off and put it away again.

I forgot my lunch, how will I contact my parents?

You will not be able to contact your parents using your phone during school hours.

However, you can contact your parents through existing school processes, such as phoning them from the school office.

How will I contact my parents in the event of an emergency?

You will not be able to contact your parents using your phone during school hours.

If you become unwell or experience an issue during the school day, it is important that you report to a staff member in the first instance. Staff will follow appropriate school processes and make contact with your parents.

In the event of an emergency at school, the school will follow their Emergency Response Plan to ensure the safety and wellbeing of all students and staff, which includes making contact with parents and carers.

I have a part-time job, how will my employer contact me?

Students can bring their mobile phones to school; however, they must be switched off and put 'away for the day' during school hours.

It is important that you notify your employer that you will not be able to receive or respond to messages and calls during school hours. After school hours, students will be able to check for messages from their employers.

In some instances, if you contribute financially to the household, exemptions may be available. Please speak with the school principal regarding this matter.

Will I be able to use my phone / wearable device to make school payments?

Each school, in consultation with their school community, will decide whether mobile phones can be used to make payments, including for tuckshop, uniform shop and office payments.

If schools do not allow phones to make payments, a range of other payment options will continue to be available for students such as, cash, debit or credit card, online ordering or pre-loaded student cards.

Can I use my phone while I'm on an excursion?

Mobile phones and wearable devices are not to be used during school activities such as representative sport, camps and excursions, unless an exception is made by the principal.

If this is the case, information will be included in the excursion permission form.

Who is responsible for my phone during the day?

If you choose to bring a phone to school, you will be responsible for the mobile phone during the school day.

Each school, in consultation with their community, will make decisions about how and where student mobile phones will be stored during the school day. Your principal and teachers will communicate this expectation to you.

If you are unsure where you should store your phone, please ask a staff member.